




studio



ARCHITECTS

**MEET THE FIRM**  
**JOIN OUR TEAM**





*"Most notable across the building, in every room and every space, are the smiles; students and teachers are happy and grateful for an environment that supports our focus on both learning and community."*

*Sharon Lisanckie, Executive Director, Boston Prep*

# **CONTENTS**

---

- 5** WHO WE ARE
- 6** VISION
- 8** THREE DIMENSIONS OF DESIGN
- 10** DIVERSITY + INCLUSION
- 12** WORKPLACE + CULTURE
- 14** HOUSING FOR DIVERSE COMMUNITIES
- 16** DESIGN FOR EDUCATION
- 18** SUSTAINABLE DESIGN
- 20** AIA 2030 COMMITMENT







# WHO WE ARE

Studio G Architects was founded in 1991 to build sustainable communities through building, urban design, and planning.

## WE SPECIALIZE IN:

- Designing beautiful, functional places to live, learn, work, play, and gather
- Sustainable, green and healthy buildings and landscapes
- Preserving historic structures, often adapted for new uses
- Urban revitalization



The 21-person firm is led by founder and Managing Principal, Gail Sullivan. Gail is committed to designing sustainable communities that support a diverse population, leading by example to demonstrate the power of public interest architecture. She integrates high quality architectural design with a collaborative process that engages diverse clients to resolve complex functional, social, and programmatic concerns. She is a licensed architect in Massachusetts, Maine, and Rhode Island. Additionally, nine other team members are licensed in Mass.

Studio G Architects is a certified woman-owned business (WBE) in Massachusetts and Rhode Island. We are diverse by design: multi-racial and multi-ethnic, LGBTQIA+ friendly, and 57% women.

We recruit, support and mentor diverse employees who share a commitment to design excellence, superior client service, and environmental and social sustainability.

*"I would never hesitate to recommend [Studio G Architects] to anyone that wants to beautify [and] dignify their surroundings."*

*Beatriz M. Zapater, Director of Greater Eggleston Community High School 1992–2002*







# VISION

---

Studio G Architects aims to improve lives and enhance spaces through insightful and responsive design solutions. We believe architects have a unique opportunity and social responsibility to leverage the creative potential of design to respond to the individual needs and the challenges defining our era.

In the 21st century, the threat of global climate change is palpable. At Studio G Architects, we embrace the critical role designers play in confronting this issue by utilizing sustainable principles, practices and technologies to renew humanity's reciprocal relationship with the environment and preserve our planet's built and natural landscapes.

Studio G Architects' commitment to sustainable design is our foundation. Our understanding of sustainability encompasses economic and social viability, as well as environmental issues. For us, sustainable communities are distinguished by architecture that is:

## **ENVIRONMENTALLY SENSITIVE**

We integrate environmentally sensitive and sensible materials and techniques into our projects to minimize the use of non-renewable resources. We investigate the life cycle value of systems and materials to ensure efficient use of limited resources.

We balance these considerations against the client's specific constraints, to develop responsive, buildable designs that reflect their values and support their priorities.

## **PEOPLE-CENTERED**

A successful design captures the essence of a community to support and enhance the activities that transpire there. Our designs reflect our clients' values and the qualities that make them unique.

Our varied experience in different types of buildings and architectural style, speaks to the diversity of our clients' visions, values and requirements, and to our dedication to crafting spaces that sustain their communities.

We contribute to supporting organizations that, with broad visions and modest means, make a difference in the communities they serve.

## **PLACE-SPECIFIC**

We are curious designers who utilize design as a tool to enhance the fabric of community. In the design of any building, landscape or neighborhood, there is an opportunity to explore the specific culture, history and physicality of a place and the people who live there. Design which embraces the cultures, values and traditions of a community and engages the idiosyncrasies of a site defines a unique sense of place.

## **MIXED-USE**

Neighborhoods that possess a mix of housing types, workplaces, commerce and public spaces tend to be economically diverse and resilient, supporting people of varied ages, means and lifestyles. With public transit nearby, accessible pedestrian and bicycle paths and welcoming public spaces, such diverse neighborhoods encourage interaction and sustain community.







# THREE DIMENSIONS OF DESIGN

---

Design is a powerful tool. It resolves problems, reveals unexpected solutions, and unifies different points of view into a satisfying and singular outcome. Yet, a great project isn't the only outcome of good design.

Backed by a thoughtful process and vision, design educates, builds relationships, transforms spaces and the people who inhabit them. Studio G Architects strives to utilize this potential to elevate the quality and effectiveness of our design work.

## DESIGN EDUCATES

We appreciate each opportunity to educate clients about the value of design and the potential of the process in order to engage their interest and participation.

Simultaneously, our clients educate us. Their vision, needs and constraints, and the values and characteristics that define them, are central to our design process. Engaging with clients, our design explores expectations, validates or challenges requirements, supports or re-frames aspirations.

From such an in-depth process, the team develops a cohesive and unified project vision that guides design efforts and produces a resolved and highly functional design.

## DESIGN ENGAGES

Because people are at the heart of Studio G Architects' design approach, the relationships developed through the process are as important as the final design. Each project has multiple communities inside and outside the client organization with distinct perspectives, from building committee to neighborhood

stakeholders. The integration and management of these groups are critically important to fuel progress. We engage each group strategically to develop ideas, manage concerns, stimulate excitement and generate support.

We thrive on such an integrative, collaborative process. It produces a richer design which echoes the values and experiences of the whole community.

## DESIGN TRANSFORMS

Studio G Architects aims to counteract the trend of throw-away, out-sized and thoughtless construction with projects that transform the places people inhabit. We aspire to create vibrant, livable, pedestrian-oriented villages that are truly sustainable communities.

Just as the shopping mall surrounded by asphalt can define 20th century development, we seek to ensure that distinctive and vibrant communities are the hallmark of 21st century design.

We are challenged by our clients' needs to rethink common problems and provide original solutions consistent with this vision of 21st century sustainable communities.

In so doing, we help our clients flourish, and contribute to the long-term health and viability of the communities they occupy.

*"The architectural team at Studio G has really made this an engaging process for our school community. It is clear through their creative and innovative design scheme that they took the time to learn about us. We are excited to transition to this new building that truly represents who we are as a community."*

*- Brian O'Donoghue, Principal, Florence Roche Elementary School*







# DIVERSITY & INCLUSION

Studio G Architects is built upon a belief in the power of public interest architecture to help transform lives through great design and a collaborative, engaging design process. Leading by example for 30 years, we ‘Think Global/Act Local’ to advance social equity, environmental sustainability, and community empowerment through engagement.

Our commitment to **social equity** is evident in our projects: education, shelter, public and mission-driven organizations. It is demonstrated in the design: each project enhances the surrounding community and the lives of its

occupants, often in unforeseen ways. It is expressed in the process: our team is highly collaborative, engaging stakeholders in planning and design; we are an advocate for our clients and building inhabitants.

Studio G is **diverse by design**. Our 21-person team is 57% women, 17% people of color, 35% LGBTQIA+, and 100% committed to the firm’s values. The leadership of multiple women, conscious mentoring, and encouragement of peer learning all contribute to empower staff at all levels and to building the next generation of diverse designers.



57% Women

17% People of Color

35% LGBTQIA+

*Gail Sullivan recognizes the power of, and need for, diversity in architecture and design. She creates an environment where women of all cultural backgrounds can flourish, be confident and stand as equals with their male counterparts in today’s design and construction industry.”*

*Margaret Okonkwo, Former Employee 2001-2017*







# WORKPLACE + CULTURE

Studio G is committed to creating a workplace for our employees that is professionally rewarding, respectful to all, and supports each employee as a whole person. We take a three-pronged approach to support each member of our team.

## **Professional Development**

Recognized by AIA New England as an Emerging Professional Friendly Firm, we support our employees at all levels in their professional development. All employees are offered reimbursement for professional development programs and can draw on a bank of professional development time. Studio G fully reimburses staff for professional registrations and memberships such as NCARB, AIA, and registration with the Commonwealth of Massachusetts. Lunch & Learns are offered with a wide variety of industry partners to maintain knowledge in the latest offerings to achieve design goals.

## **Firm Culture**

Our firm is a community and we live by our motto “building sustainable communities” each day. Signed on to the AIA 2030 Commitment, Studio G brings sustainability principles beyond our designs and into our office through a recycling and composting program. We volunteer at Rosie’s Place, Kids Build, and host architectural student visits. At the holidays we exchange creative gifts in our Alphabet Yankee Swap.

## **Work-Life Balance**

The Studio G family extends beyond our office. Our celebrations and events include spouses and children. We support work-life balance with flexible scheduling that can respond to individual needs. Just as important to our 4-legged family members, our office is dog-friendly. Well-trained pooches are welcome to work alongside our team.









# HOUSING FOR DIVERSE COMMUNITIES

Studio G Architects designs affordable, market-rate, and public housing, both rental and home ownership. We design with a belief that housing is more than shelter. Housing should forge a sense of community among residents and within the larger neighborhood, through shared amenities within a housing complex as well as ground floor retail and outdoor spaces that engage the broader community.

We see housing projects as an opportunity to positively impact the environment. We design high performance buildings that balance initial capital investment, long-term operational costs, and the building value to its owner, inhabitants and community. Our designs are energy and resource-efficient, maximizing opportunities for passive solar heating and natural ventilation. We utilize non-toxic and recycled materials for good indoor air quality. We target LEED, Energy Star, Passive House, and Enterprise Green Communities standards, whether or not formal certification is pursued.

Our projects range in scale from 2 to 300 units, across the spectrum of housing types, from transit-oriented, mixed use developments in dense urban areas, to Chapter 40B affordable housing in small towns, to service-enhanced and senior housing. We have developed tools and systems that deliver both immediate and lasting value to our clients: a streamlined design process that brings projects online as quickly as possible, and produces buildings that stand the test of time.









# DESIGN FOR EDUCATION

School Design has been a key focus for Studio G Architects since its inception. We have designed projects ranging from elementary schools to higher education, from child care centers to after-school teen programs, and have earned a reputation for delivering aspirational, 21<sup>st</sup> century education designs that address each client's mission.

Studio G has designed over 40 schools and early childhood centers including new buildings for Match Community Day School, Excel Academy, Boston Preparatory, Atlantis and Sturgis Charter Schools; additions for Holyoke Community Charter School and Innovation Academy, and major renovations for Greater Egleston Community High School, Paige Academy, and Hill View Montessori. For Boston Latin School - the oldest school in the country - we designed a shared green roof design aimed to provide experiential, project-based learning opportunities with a STEAM focus.

Studio G is working on the Florence Roche Elementary School in Groton, an exciting MSBA school project for 650 K-4 students. At the PK-8 Mountain View School, Studio G served as Associate Architect for Elementary School Design for grades PK-5.

We are partnering with Benjamin Franklin Cummings Institute of Technology (BFCIT), a private non-profit college offering affordable technical career education for their Nubian Square campus. The new building will support 8 academic departments and 600+ students.

Over the last five years, 50% of Studio G's projects have been educational facilities. Studio G personnel have earned MSBA accepted MCPPO Certification, and have lectured on best practices in education design at AIA and BSA conferences, and an MSBA Designer Roundtable presentation.





# SUSTAINABLE DESIGN

The G in Studio G stands for Green architecture. Sustainable design principles are the cornerstone of our practice and basic tenets of design philosophy. We design buildings that conserve or generate energy, have small carbon and water footprints, and make responsible use of limited or non-renewable resources over their life-cycle.

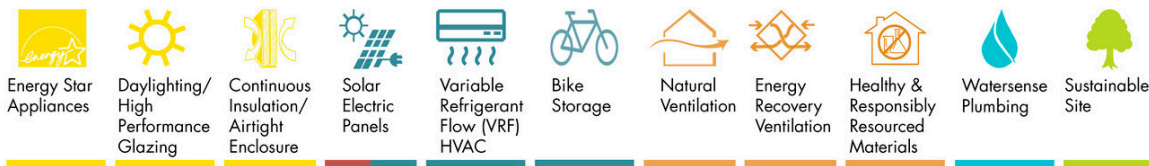
Our integrated sustainable design process begins with stakeholder workshops to identify sustainability goals and brainstorm strategies that improve building performance and minimize operating costs. We utilize a whole-building approach that considers how the project plan and systems overlap to achieve a thoughtful sustainable design.

- Fundamental sustainable strategies include:
- Passive solar siting, natural ventilation, and daylighting
- Tight building envelopes to reduce heating and cooling loads.
- Right-sized HVAC units to conserve resources

and reduce capital investment.

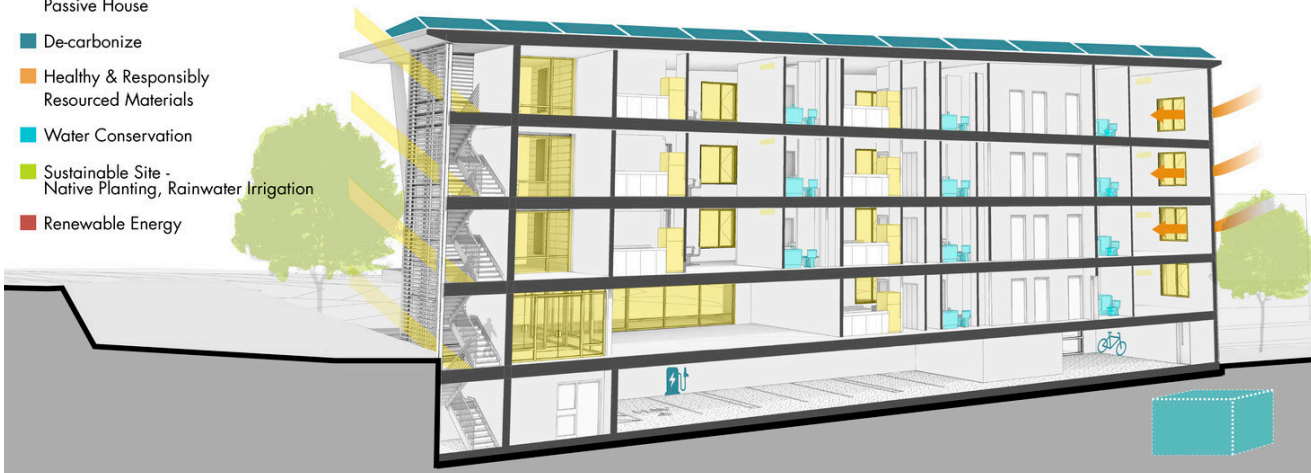
- Energy efficient appliances and lighting. Low-flow plumbing.
- Recycled and non-toxic building materials to ensure a healthy indoor environment.
- Planted roofs to reduce heat absorption and water runoff.
- Renewable energy systems, such as photovoltaic and solar thermal panels to shrink the carbon footprint.

We are fluent in designing to achieve LEED Benchmark and Energy Star standards. We use these as benchmarks even when not pursuing certification. Massachusetts Affordable Housing Alliance Headquarters is EnergyStar certified. 270 Centre Street was designed to meet LEED Certification. Match, Excel Academy and, Boston Preparatory Charter Schools, and MIT Technology Children’s Center were all designed to meet LEED Silver. E+ Highland aims to be energy positive, and attain LEED Platinum, and Passive House certification.



## SUSTAINABILITY GOALS

- Low Energy Design / LEED Certifiable / Passive House
- De-carbonize
- Healthy & Responsibly Resourced Materials
- Water Conservation
- Sustainable Site - Native Planting, Rainwater Irrigation
- Renewable Energy





Studio G Architects is committed to meeting the AIA 2030 Challenge. The firm is a member of Building Green, Built Environment Plus, the Living Building Institute, NESEA, and USGBC. Our team includes LEED Accredited Professionals and Certified Passive House consultants. In 2009, we were honored with Mayor Menino's Green Firm Award.

This dedication to sustainable and high-performance design goes beyond new construction to renovation projects as well. We apply our integrated approach to conditions assessment, code compliance and performance targets through an Integrated Design Charrette at the project outset. This includes:

- Early building performance modeling to identify strategies for increased energy efficiency.
- Review targets and energy model to verify compliance throughout the design
- Engage our client and consultants to evaluate options for significant performance improvements
- Research and meetings with utilities and finance entities to identify potential rebates, grants, subsidies and investment
- Analysis of renewable energy options

Studio G utilizes multiple software applications in-house to assist in design decision-making to reduce energy and carbon footprints of buildings, including Sefaira for energy modeling and a few applications for selecting healthy materials.

### ***Infrared Imaging***

Building envelope is a key component to providing a comfortable environment for inhabitants. When we are examining the existing conditions of a building, we want to know how well the envelope and associated systems are keeping in the heat or cooling depending upon the season. By using an infrared heat camera, we

can visually illustrate to clients and inhabitants where heat (or cooling) loss is taking place thereby increasing utility costs and wasting valuable energy.

### ***THERM Analysis***

Thermal bridging is when something with a higher conductivity than the materials around it is continuous from outside to inside, and acts as a bridge for hot or cold air to move into and out of the building. This impacts the energy required to heat and cool the building and creates cold spots in the buildings that potentially cause condensation and mold growth. Our team uses THERM, a thermal analysis program to design thermal break details, such as continuous insulation, which mitigate these risks.

### ***Hygrothermal Analysis***

Passive Houses are considered extremely low energy and require high R-values and an airtight building envelope. Higher insulation levels reduce mold risk on the interior surface, however, it lowers the drying potential of the assembly thereby increasing mold growth. This airtight construction increases mold risk due to the higher relative indoor humidity.

A Hygrothermal analysis of a building envelope assesses the hygrothermal behavior of a building's individual components, specifically its mold growth potential. Thus it is critical to analyze the mold growth risk for high performance buildings. We use the WUFI Passive/WUFI Plus program to assess the mold risk on key building envelope components.

### ***Embodied Carbon Analysis***

Tally analyzes embodied carbon, the carbon footprint, of materials and systems, allowing us to select the best choice with the smallest carbon footprint.



# AIA 2030 SUSTAINABILITY ACTION PLAN

As architects, we understand the need to exercise leadership in creating the built environment. We believe we must alter our profession’s practices and encourage our clients and the entire design and construction industry to join with us to change the course of the planet’s future.

The places where we live, work, and play represent the largest sources of greenhouse gas emissions in America, as well as around the world. The design and construction industry has made significant strides toward creating high performance buildings of all types and uses. As a result, the industry is positioned to have a profound impact by continuing to foster high building performance and reducing building-related greenhouse gas emissions.

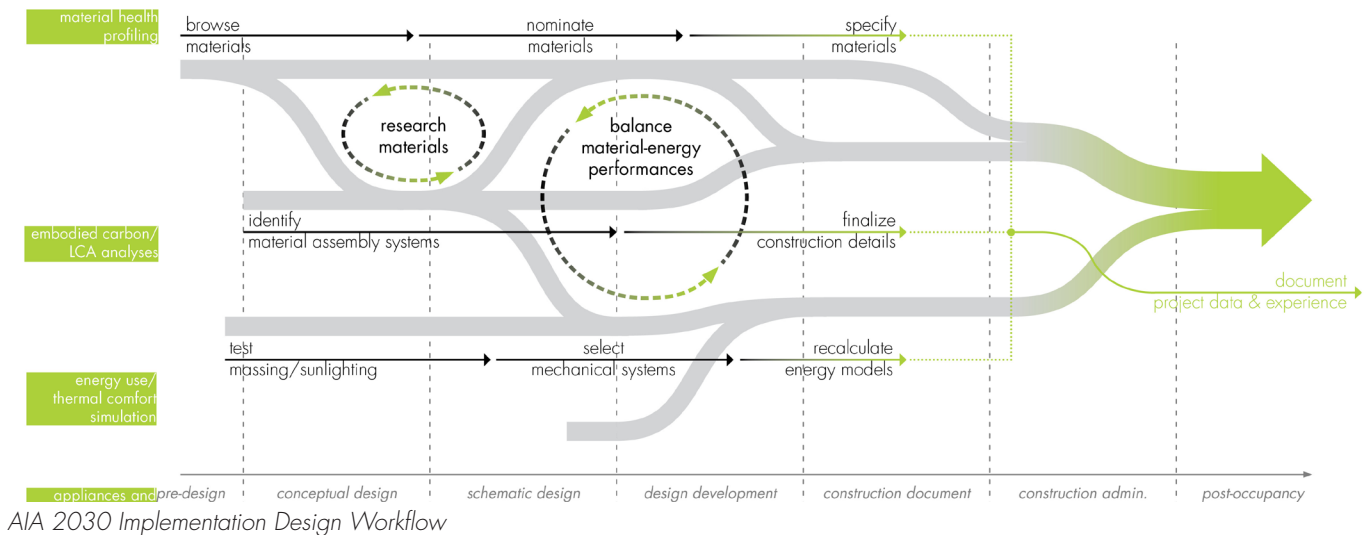
Our Sustainability Action Plan (SAP) is more than a statement of values and aspirations, it puts forth actionable strategies and measurements to continually focus on evaluation, adaptation, and improvement. Our SAP sets forth these team approach tactics:

- **Early Enlistment** of the latest sustainable design software tools and data resources

- **Frequent Iteration** in implementing energy performance, resource saving, and carbon profiling-focused analyses for design and project management decisions.
- **“Push and Pull”** between analyzed findings from selected key criteria, such as thermal efficiency, with metadata, such as embodied carbon profiles. In order to achieve an ideal balance that would jeopardize neither use nor passive sustainable performances.

Through these tactics we aspire to:

- 100% of new construction projects meeting the **energy use** reduction target by tracking Energy Use Intensity (EUI) in each project phase
- 100% of all projects meeting the **water use** reduction target
- Established protocol to profile projects’ **embodied carbon** footprints by design options and project phases
- Internal benchmark to meet or exceed green building **certification** thresholds











**Studio G Architects**

179 Boylston Street, Building P  
Jamaica Plain, MA 02130

T 617.524.5558

F 617.524.5544

[www.studiogarchitects.com](http://www.studiogarchitects.com)